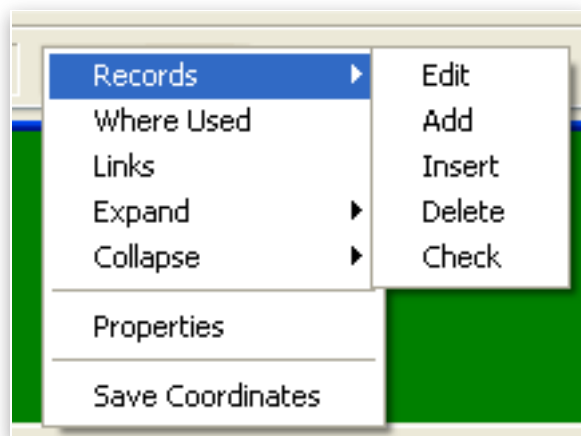
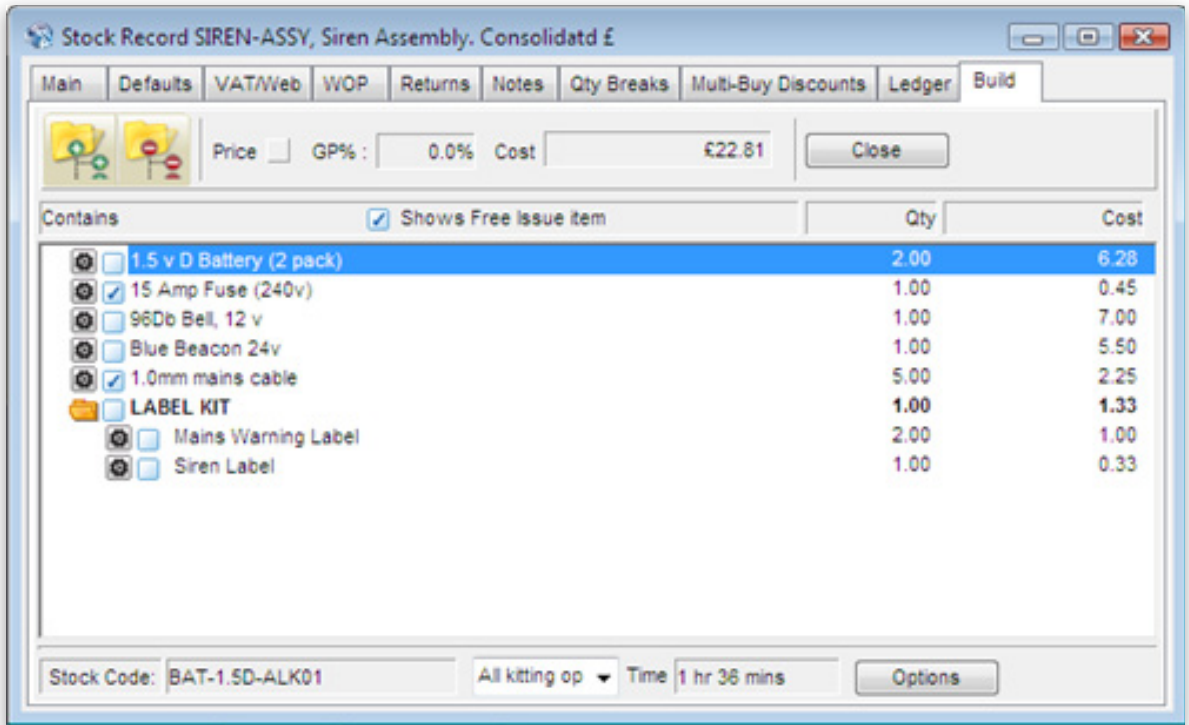


HelpSheet031.



Bill of Material (BOM) Stock explained

This is a Stock record that has its type set to Bill of Materials. The Build tab is then used to build a list of components that make up the Product.



Records –

Edit – This option allows you to edit the stock items / Sub BoM that create a Build.

Add - This option allows you to add a new stock item into the build or a Sub BoM.

Insert - This option allows you to insert a new stock item in to the BoM list.

Delete - This option allows you to Delete a Stock Record or a Sub BoM from the build.

Check - This gives you the option to recalculate the cost price of the highlighted line on the BOM.

Where Used –

This option changes the way the Build tab is viewed when selected it shows other BOM products which are in currently stocked.

Links –

This option displays any additional links or items saved against this stock record.

Expand –

This Level – This opens the level currently highlight.

All Levels - This option open the current highlight record/folder and all folders below the select item.

Entire BOM Ledger - This option opening all the Folders held with the Build.

Collapse –

This Level - This option will close the current highlighted folder.

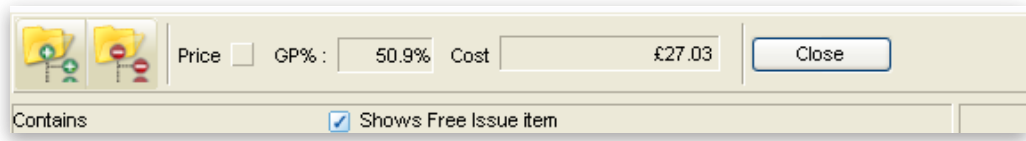
Entire BOM ledger - This option when select will close all levels on the Build Tab.

Properties –

The option allows you to reset the background, Heads Text and Highlight bar colour and text. There is a defaults option within the properties this will reset that screen back to the factory setting.

Save Coordinates –

This option allows you to save the screen size of the selected window.



Expand All Levels –

This option opens the folder/ group that is highlighted and all the folders below that.

Collapse Tree -

This option closes all the folder/groups open on the Build Tab, leaving the top level of folders.

Price –

The tickbox has implication for both pricing and picking. If this option is ticked this will mean that the price is state on the kit and not by the individual components, and the kit will automatically picked on an order.

GP% -

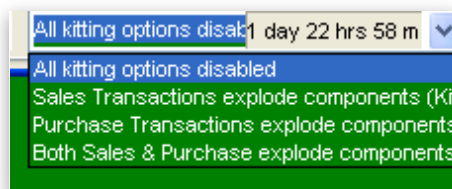
This shows how the price set in the stock records main tab compares with the current total cost if components.

Cost –

This option shows the total cost cost of the components as last calculated.

Shows Free Issue item -

If this option is ticked it will show the components as free issue, tick the free issue box for the component in each BoM that uses it.



Kits

There are four options available.

All Kitting Options Disabled -

This means that when you order a BOM the detailed makeup of the item will not be exploded onto the order.

Sales Transactions Explode Components -

This means when you enter a sales order for the BOM the details of all the products making up the item will be generated onto the Sales Order.

Purchase Transactions Explode Components -

This means that when you enter a purchase order the full details of the BOM you are purchasing will be exploded onto the Purchase Order.

Both Sales & Purchase Explode Components -

This will generate details of all items from the BOM onto both Sales and Purchase Orders.

Production Time -

This option shows the production time on this Build. This is calculated from the totals on the sub BOM records.